

AERA-vator[®]

One Tool. Multiple Uses. Better Turf.

AERA-VATOR SHAFT | MULTI-TINE SHAFT | SLICER SHAFT
SPIKER SHAFT | CORING SHAFT | POWER SEEDER SHAFT



164 Oakridge Church Road | Tifton, GA 31794
1-229-382-4768 (or) 1-800-363-8780
www.1stproducts.com



ABOUT THE **AERA-vator**®



Keeping your turf healthy throughout the seasons doesn't have to be a 24/7 process.

With the Universal design, our innovative equipment addresses issues you face everyday in growing and maintaining professional-level turf for your golf course, sports field, commercial landscapes and all other turf needs.



Premier aeration and seeding equipment

Creates a healthy rooting system for natural turf. The innovative AERA-vator provides better air and water infiltration to give roots the ability to grow stronger and deeper into the soil. Add the optional seed box to convert your AERA-Vator to the Seeda-vator for the best of both.



Versatile, Cost-Effective

The AERA-vator is the versatile, cost-effective aeration equipment you can rely on to deliver beautiful and vibrant turf all year round.



Specifications

**Combine weight(s) together when configuring for the total weight.*

AERA-vator Shaft



AERA-VATOR FRAME

FRAME WEIGHT*: 303lbs / 347lbs. / 672lbs.
WORKING WIDTH: 40" / 60" / 80"
CENTER DRIVE GEARBOX: 1:1 Rt. Angle / 1:1 Rt. Angle / 1:1 Tee
END DRIVE: (3) BX Belts / (4) BX Belts / (6) BX Belts Shaft Vibration Frequency
CYCLES/MIN.: @540 PTO RPM=800
HEAVY DUTY LIFT TRAIL HITCH: 3' turn radius approx.
DRIVELINE: 1³/₈" Spline w/ Safety Shield Finish Black Acrylic Trim

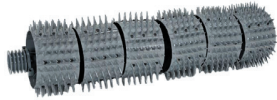
UA40 / UA60 / UA80

AERA-VATOR SHAFT

WEIGHT*: 245lbs. / 340 lbs.
AERATION DENSITY: 55 Holes per Sq. Ft.
SHELLS (6 per ROTOR) 36 / 48
ROTOR BEARINGS: Double Sealed Tapered Roller
SIDE-TO-SIDE TINE TRAVEL: 1/2" Vibration Depth 1³/₈"

UA60 / UA80

Multi-Tine Shaft



MULTI-TINE SHAFT

WEIGHT*: 175lbs. / 245lbs. / 340lbs.
Vibrating Depth: 1³/₈" holes
Aeration Density: 55 holes per Sq. Ft.
Replaceable shells: 24 / 36 / 48
Rotor Bearings: Double Sealed Tapered Roller
SIDE-TO-SIDE TINE TRAVEL: 1/2"

UA40 / UA60 / UA80

Slicer Shaft



SLICER SHAFT

WEIGHT*: 145lbs. / 155lbs. / 220lbs.
AERATION DENSITY: 5-6 slits per Sq. Ft.
BLADES: 40 / 60 / 80 10 GA. Hardened Spring Steel
BEARINGS: 50mm Ball Bearing Vertical Oscillation ⁵/₈"
VIBRATION DEPTH: 4¹/₄"
BLADE SPACING: 5"

UA40 / UA60 / UA80

Coring Shaft



CORING SHAFT

WEIGHT*: 145lbs. / 175lbs. / 192lbs.
AERATION DENSITY: 5-6 slits per Sq. Ft.
SPOONS: 3/4 ID hardened steel spoons 64 / 96 / 128
BEARINGS: Oil Impregnated Bronze
CORING DEPTH: Up to 4¹/₂"
SPACING: 5"

UA40 / UA60 / UA80

Spiker Shaft

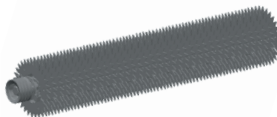


SPIKER SHAFT

WEIGHT*: 236lbs. / 402lbs. / 552lbs.
AERATION DENSITY: 57-58 holes per Sq. Ft.
TINES: 1⁷/₈" long conical tines on casted ring 25 / 37 / 49
BEARINGS: 1³/₈" Ball Bearing
TINE DEPTH: 1⁷/₈"

UA40 / UA60 / UA80

Power Seeder Shaft



POWER SEEDER SHAFT

FRAME w/ RAKE & ROLLER

WEIGHT*: 225lbs. / 250lbs. / 350lbs.
AERATION DENSITY: 55 holes per Sq. Ft.
TINES: Replaceable shells 16 / 24 / 32 shells Rotor
BEARINGS: Double row deep groove Ball Bearing
VIBRATION DEPTH: 1¹/₂"
VERTICAL TRAVEL: 1¹/₄"

UA40 / UA60 / UA80



SEED BOX

WEIGHT*: 200lbs. / 330lbs. / 380lbs.
CAPACITY: 4.7 / 6.7 / 9.4 cubic ft.
RATE CONTROL: Micro Flute Adjustment/Seed Cup Gauge Mechanism / Interchangeable Sprockets
OUTLETS: 10 / 15 / 20
DRIVE: Electric / Ground / Ground

UA40 / UA60 / UA80

ROLLER (STANDARD) - UA40 / UA60 / UA80

WEIGHT*: 107lbs. / 225lbs. / 275lbs.
DIAMETER: 8 ⁵/₈"

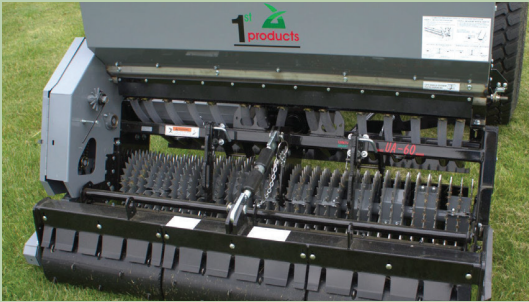
SPIKER ROLLER - UA40 / UA60 / UA80

WEIGHT*: 250lbs. / 450lbs. / 575lbs.
SPIKE: 1⁷/₈" long conical tines on casted ring 25 / 37 / 49
DENSITY: 57-58 holes per Sq. Ft.

RAKE (STANDARD) - UA40 / UA60 / UA80

WEIGHT*: N/A / 37lbs. / 53lbs.
TEETH SPACING: 3³/₄"
WORKING WIDTH: N/A / 60" / 80"

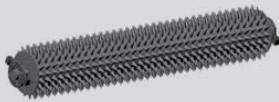
Universal AERA-Vator Shaft Options



Power Seeder

SHAFT

This shaft was designed to be able to over seed into low-mow height of cut, such as golf course fairways and tees.



Faster Turnaround

Designed for fine turf seeding on fairways, tees and all manicured areas with no disruption to surface playing area. With the seed box attachment, seeding is fast and efficient.



Minimal Disruption

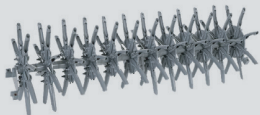
The vibration allows for seeding in shallow rooted turf creating no cleanup and does not disrupt play.



Coring

SHAFT

This shaft uses a hollow tine to penetrate the soil. Core aeration helps reduce thatch and improves drainage.



Core Aeration

The coring shaft is non PTO powered and fits into all 1st products UA models.



High Efficiency

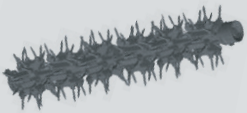
Pulls five holes per square foot, allowing for efficient aeration of the turf.



the original **AERA-vator**®

SHAFT

AERA-vating has become a popular turf practice over the last decade and can only be done with the AERA-vator shaft. This prepares a soft, fractured seed bed for optimum seed germination.



One-pass Seeding

This shaft utilizes patented vibration technology to penetrate the hardest ground and provide 100% compaction relief with no cores to cleanup. By AERA-vating, the vibrating action allows better water infiltration, and oxygen and gas exchange. With the optional seed box attachment, you can prepare the ground for seed and accurately meter a wide variety of cool and warm season grass seed.



Water and Oxygen Exchange

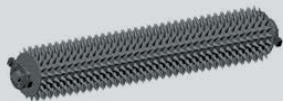
This shaft is ideal for sports fields, landscapers, golf course roughs, cart paths and much more.



Spiker

SHAFT

This shaft along with the optional seed box and rake attachment is an economical primary seeder. A second spike shaft can be added to double holes per sq/ft as a rear roller.



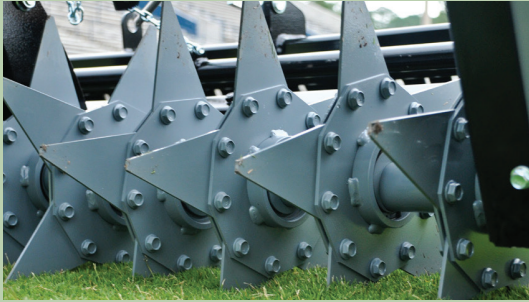
Conical Shape

The conical shape tines are cast into a ring, providing close to 60 holes per square ft.



Effective Speed

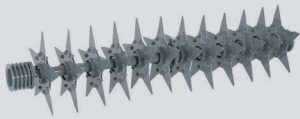
This is a great shaft to use with less disruption and if speed is a factor.



Slicer Shaft

SHAFT

Slicing is a non-disruptive practice a turf manager performs in peak growing season when temperatures are at their highest.



Vibrating Action

Patented vibrating action that forces the slicer blade into compacted turf, achieving the max depth.



Minimal Disruption

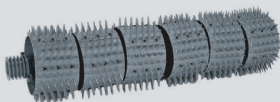
Slicing still provides enough aeration to open the ground to allow water and oxygen exchange.



Multi-Tine

SHAFT

This shaft utilizes vibration to relieve compaction on artificial playing surfaces up to 25% after the first pass. Prolongs the life expectancy well beyond the warranty.



Artificial Turf

The Multi-tine shaft's technology is gentle to the fibers.



Natural Turf

This is also an ideal shaft for fall and spring over seeding when turf is well rooted and the strongest.